

Elephant Shed

The PostgreSQL Appliance



Available as a free of charge, full open source solution

No license or subscription fees

Available on x86 and ppc64

Preconfigured and tested system

Continuous software improvement

Tremendously time saving on implementation

Custom adjustments and enhancements possible

Optional: Workshops and trainings

Optional: Service and support provided by the credativ PostgreSQL Competence Center



The credativ PostgreSQL Competence Center develops and maintains the free of charge open source project Elephant Shed. Elephant Shed is a performance optimized appliance, providing a complete PostgreSQL database environment inclusive of all tools needed for the operation of such. This appliance can be utilized as a fully usable database server. It is perfectly suited for deployment on hardware as well as on virtual environments.

Currently Elephant Shed is publicly available for the Debian operating system in the form of easily and quickly accessible packages. The packages are maintained by our PostgreSQL experts and will stay accessible for download on our repository.

Ready-made images for the most important virtualization and cloud platforms are in preparation.

Service and support by the credativ PostgreSQL Competence Center

Naturally our service does not stop with the development of the appliance. We also offer comprehensive and technical support with service level agreements, which are also available on 365 days a year and 24 hours a day as an option. This usually starts with installation support, meeting customer requests and requirements and the following integration into your system environment. Our customers can choose from a wide variety of services support, even availability options such as 24x7.

Trouble free database operation

The Elephant Shed PostgreSQL Appliance is designed for continuous operation. All components are carefully tuned and matched with each other and can be controlled via comfortable web interface. This begins with an integrated backup solution, continues with extensive monitoring and culminates in the elaborate presentation of the various measurement data. This way current conditions and performance metrics of the running database can be monitored and assessed.

Elephant Shed

The PostgreSQL Appliance



Administration via the dashboard in the web interface

One click integration of new database instances

Performance monitoring gives insights into relevant database metrics

Integrated log analysis

Preconfigured backup

systemd management

Integrated shell in the web interface

Vast documentation

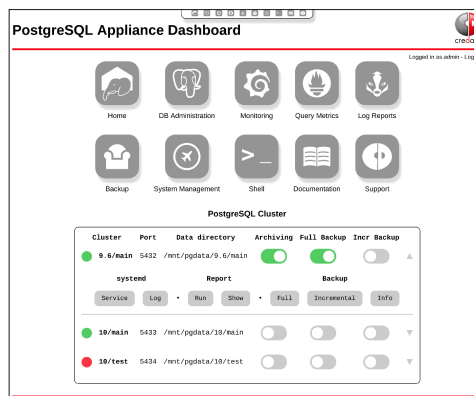
Download on the credativ repository

Support provided by the credativ PostgreSQL Competence Center

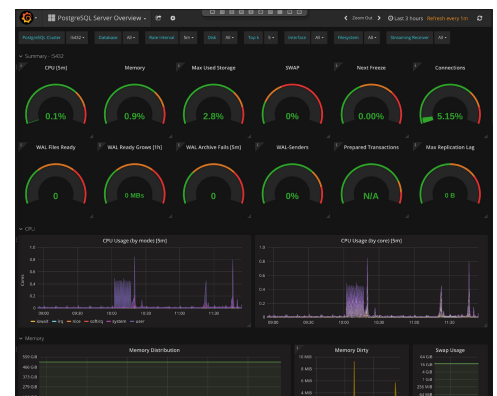


PostgreSQL is the most important RDBMS for many users today. However, for smooth operation, a performance enabled environment is required to cover all functionalities at its best. Out of our need to develop "stand alone" database servers, that could be used as an appliance without any further dependencies on the own infrastructure, this project has arisen.

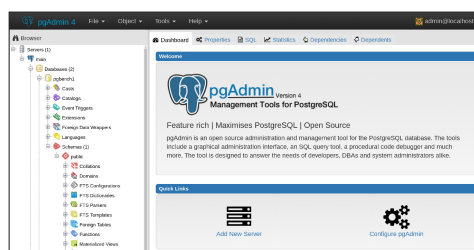
Elephant Shed bundles and integrates proven components required for easy management of a PostgreSQL server. Proven tools for all relevant aspects are already preinstalled and preconfigured. The majority of these tools can be controlled via a comfortable web interface. Even experienced PostgreSQL administrators will hardly find an area not covered by Elephant Shed.



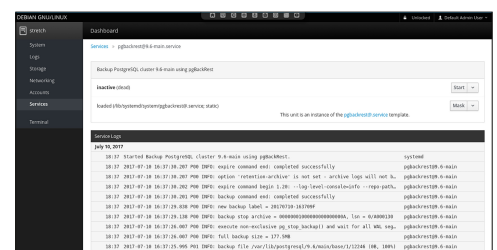
Administration of the PostgreSQL cluster can be fully done in the webinterface.



The specially developed performance monitoring enables detailed insight into all relevant database metrics.



To administrate databases pgAdmin 4 was included into the appliance. pgAdmin4 enables convenient and easy database management.



The backup system is preconfigured in a way, that not only makes it possible to restore the data, but also to determine the recovery time point to the second.