

Elephant Shed - PostgreSQL Appliance

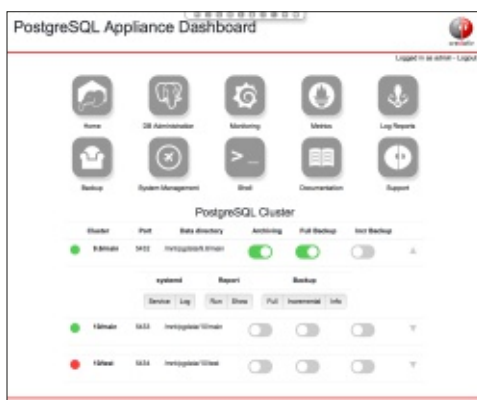
elephant-shed.io



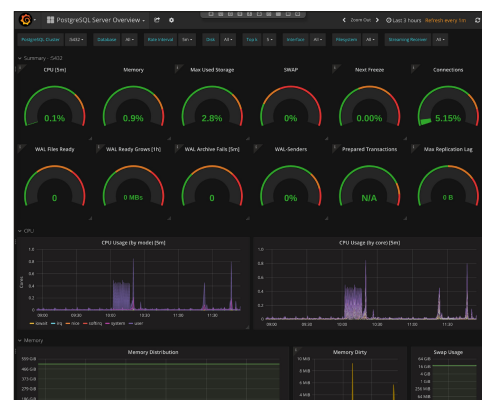
PostgreSQL and everything that goes with it, from backup to monitoring and reporting.

PostgreSQL is the most important RDBMS for many users today. However, for smooth operation, a performance enabled environment is required to cover all functionalities at its best. Out of our need to develop "stand alone" database servers, that could be used as an appliance without any further dependencies on the own infrastructure, this project has arisen.

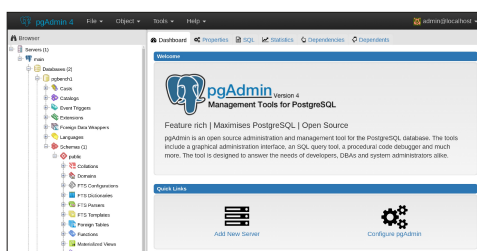
Elephant Shed bundles and integrates proven components required for easy management of a PostgreSQL server. Proven tools for all relevant aspects are already preinstalled and preconfigured. The majority of these tools can be controlled via a comfortable web interface. Even experienced PostgreSQL administrators will hardly find an area not covered by Elephant Shed.



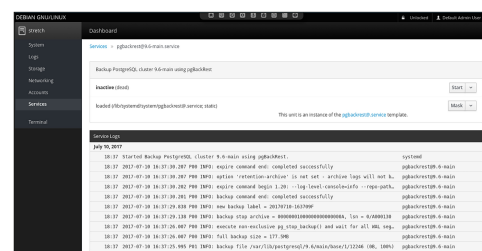
The Administration of the PostgreSQL cluster can be fully done in the webinterface.



The specially developed performance monitoring enables detailed insight into all relevant database metrics.



To administrate the databases pgAdmin 4 is included. pgAdmin4 enables convenient and easy database management.



The backup system is preconfigured in a way, that not only makes it possible to restore the data, but also to determine the recovery time point to the second.



Download
www.elephant-shed.io

Contact
Web: www.credativ.com
E-Mail: info@credativ.com
Phone: +49 2166 9901-0

Support and more

Elephant Shed is an Open Source project, developed and maintained by credativ. For the Elephant Shed PostgreSQL appliance credativ offers comprehensive technical support with service level agreements, which are also available on 365 days a year and 24 hours a day as an option.